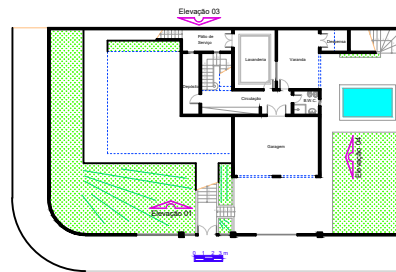
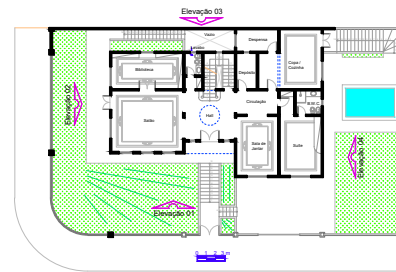


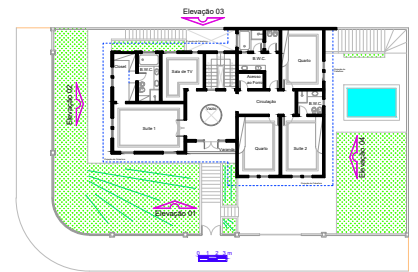
Implantação e Cobertura



Subsolo  
A = 121,28 m<sup>2</sup>

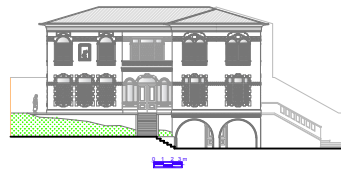


Térreo  
A = 178,43 m<sup>2</sup>



Superior  
A = 181,02 m<sup>2</sup>

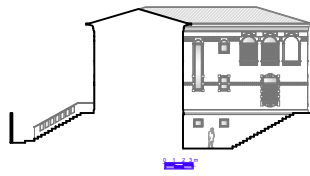
Área Total = 480,73 m<sup>2</sup>



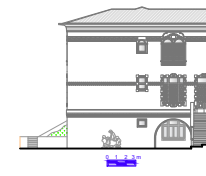
Elevação 01



Elevação 02



Elevação 03



Elevação 04